



# CLINICAL TRIALS DIVISION OF CLINICAL NEUROSCIENCE OSLO UNIVERSITY HOSPITAL

Oslo



One of the largest Nordic neuro clinic with more than 60 000 outpatient visits per year representing more than 50% of the Norwegian population



Experienced clinical trial unit



Internationally renowned state of the art research lab for personalized medicine



Register with real world data and biobank for several neurological diseases



Ambitious strategy for industry sponsored clinical trials



Cutting edge radiology technology

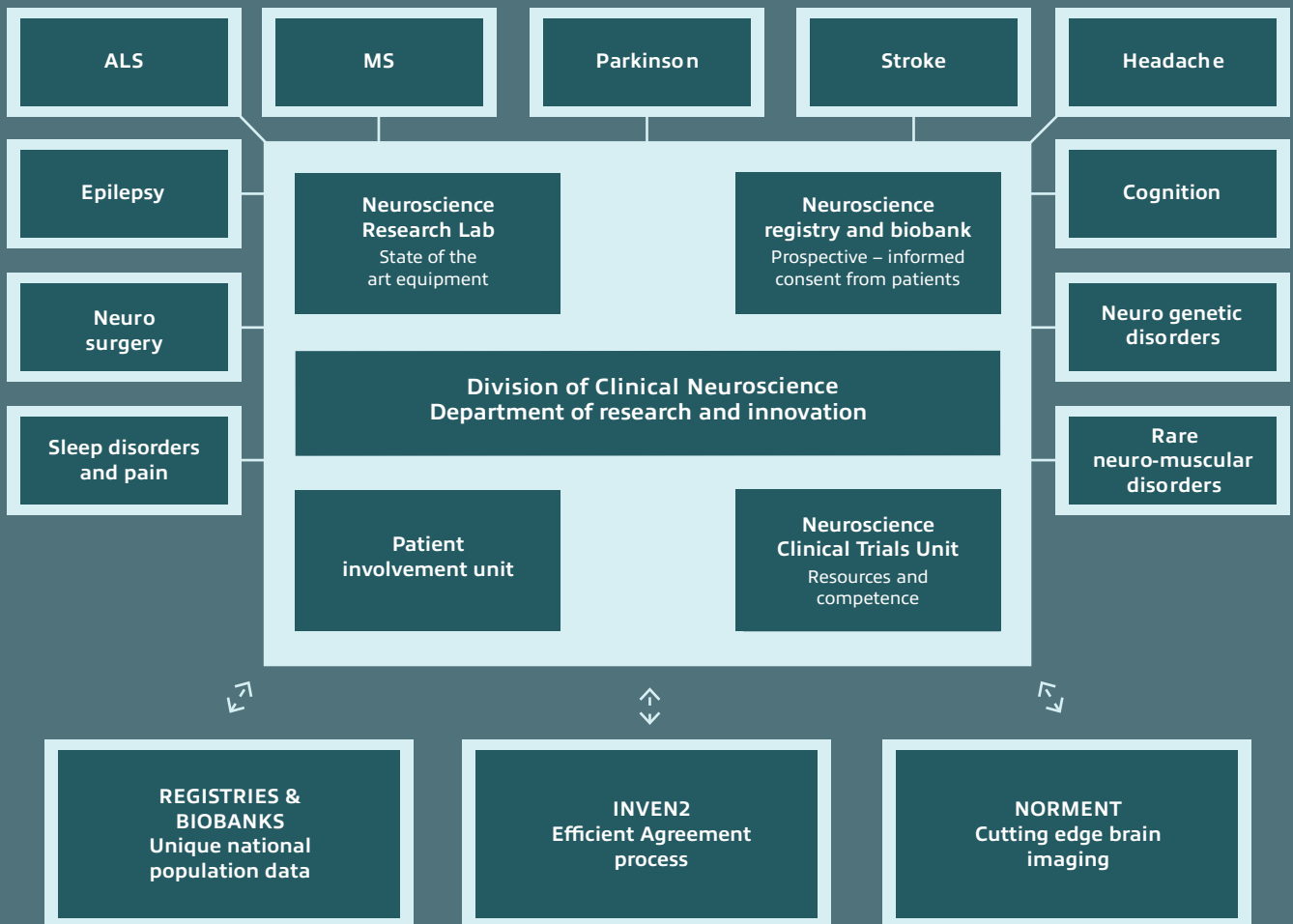
## NATIONAL ASSETS

- National Brain Health Strategy (2018-2024) setting the direction for preventive measures, health and care services and research within Brain health.
- Governmentally-backed initiatives for clinical trials and medical innovation.
- Easy to recruit patients due to a positive attitude towards research in healthcare.
- Patients ID's give continuous information of every patients location and survival.
- Ecological valid research.

## ECOSYSTEM AND NETWORK

- Efficient Agreement process for clinical trial and industry collaboration managed by Inven2 <https://www.inven2.com/no>
- Established network for inclusion of patients from other regions of Norway.
- Strong innovation infrastructure with professional TTO (Inven2) and the renowned cluster Nansen Neuroscience Cluster.
- Close collaboration with NORMENT (the Norwegian Center for Mental Disorder Research), especially within brain imaging <https://www.med.uio.no/norment/english/>

# CLINICAL TRIALS DIVISION OF CLINICAL NEUROSCIENCE OSLO UNIVERSITY HOSPITAL



**For more detailed information**

<https://www.ous-research.no/neuroscience/>

**Contact for collaboration and clinical trials**

General enquires Neuro clinic: [kliniskestudier.nevro@ous-hf.no](mailto:kliniskestudier.nevro@ous-hf.no)

Agreements: Inven2: [kliniskestudier@inven2.com](mailto:kliniskestudier@inven2.com)

# CLINICAL TRIALS

## DIVISION OF CLINICAL NEUROSCIENCE

### OSLO UNIVERSITY HOSPITAL

#### NEUROSCIENCE CLINICAL TRIAL UNIT

- Experienced study nurses and project coordinators serving all units.
- Established procedures for fast feasibility response.
- One point of contact for the clinic: kliniskestudier.nevro@ous-hf.no
- In-house lab facilities for lab sampling, processing and shipment.

---

#### NEUROSCIENCE REGISTRY AND BIOBANK

- Neuroscience research and quality registry; Are building a unique clinical data base from the patient population as prospective informed consent, for use of data and biobanks for research, signed by all patients visiting the clinic since 2017/2018.
- Access to national registries and biobanks.
- All-In Genetics; Access to cutting-edge research environments in the fields of: Population genetics, Genetic epidemiology, (Pharmaco-) epigenetics.

---

#### NEUROSCIENCE SCIENCE LAB

- State of the art modern research laboratory facilities.
- Extensive experience using a range of molecular methods, including studies of DNA variation, epigenetic factors, gene expression and proteomics approaches and use cellular models.
- A major focus within the unit are studies on neurological disorders.

---

#### PATIENT & PUBLIC INVOLVEMENT

- Internationally engagement in patient involvement in research [EUPATI - <https://www.eupati.eu/>]
- Well established processes and courses for patient involvement in research.
- Established relationships with relevant Norwegian patient organizations.

# CLINICAL TRIALS DIVISION OF CLINICAL NEUROSCIENCE OSLO UNIVERSITY HOSPITAL

## CONTACT FOR COLLABORATION AND CLINICAL TRIALS:

---

### ALS:

Angelina Maniaol (angman@ous-hf.no) & Mathias Toft (mtoft@ous-hf.no)

---

### COGNITION:

Hege Ihle-Hansen (hmihle@ous-hf.no) & Mona Skjelland (moskje@ous-hf.no)

---

### MS:

Gro Owren Nygaard (uxgryg@ous-hf.no) & Elisabeth Gulowsen Celius (uxelgu@ous-hf.no)

---

### NEUROGENETIC DISORDERS AND HUNTINGTONS DISEASE:

Lasse Pihlstrøm (laspih@ous-hf.no) & Mathias Toft (mtoft@ous-hf.no)

---

### RARE NEUROMUSCULAR DISORDERS (NMD):

Kristin Ørstavik (krorstav@ous-hf.no) & Mathias Toft (mtoft@ous-hf.no)

---

### NEURO SURGERY:

Einar Vik-Mo (uxvieb@ous-hf.no)

---

### SLEEP DISORDERS AND PAIN:

Kristian Bernhard Nilsen (uxnikq@ous-hf.no) & John-Anker Zwart (uxzwjo@ous-hf.no)

---

### PARKINSON:

Mathias Toft (mtoft@ous-hf.no)

---

### STROKE:

Else Charlotte Sandset (elsesa@ous-hf.no) & Mona Skjelland (moskje@ous-hf.no)

---

### HEADACHE:

Anne Hege Aamodt (anhaam@ous-hf.no) & John-Anker Zwart (uxzwjo@ous-hf.no)

---

### EPILEPSY:

Erik Tauboll (etauboll@ous-hf.no)

---

### COMPLEX EPILEPSY:

Kristin Alfstad (kristina@ous-hf.no) & Morten Lossius (mortenl@ous-hf.no)

---

Please copy [kliniskestudier.nevro@ous-hf.no](mailto:kliniskestudier.nevro@ous-hf.no) in all your direct correspondence